

## **Hydraulic Wheelset Guiding Bushes**

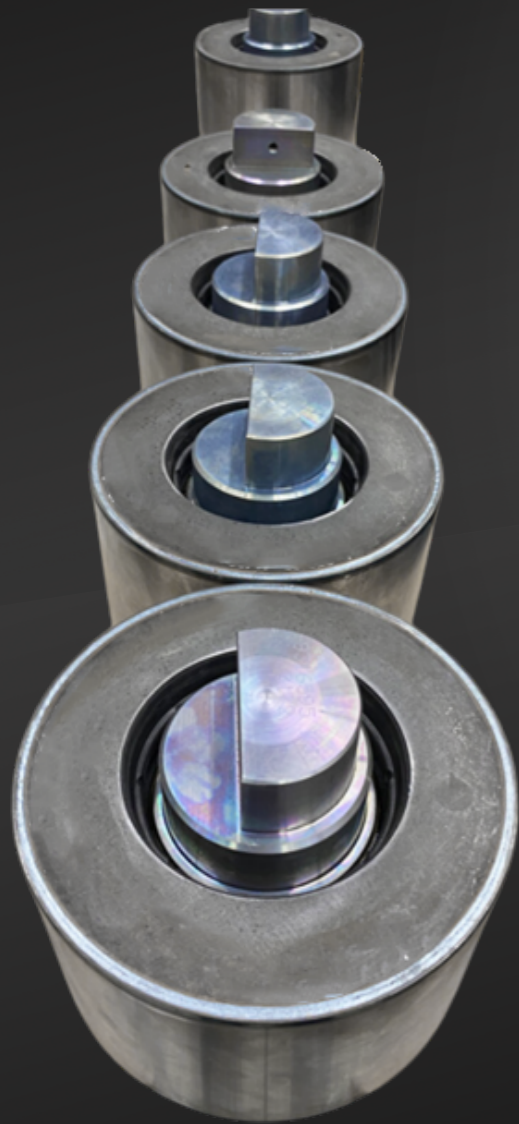
Ensuring Smooth  
and Safe Train Operation

# Continental is Improving Train Suspension With Hydraulic Wheelset Guiding Bushes

Continental is combining two functions into one solution: designed to keep our customers' trains running smoothly and reliably, the Hydraulic Wheelset Guiding Bushes meet the needs for high longitudinal stiffness for straight-line movement and for low longitudinal stiffness for curves.

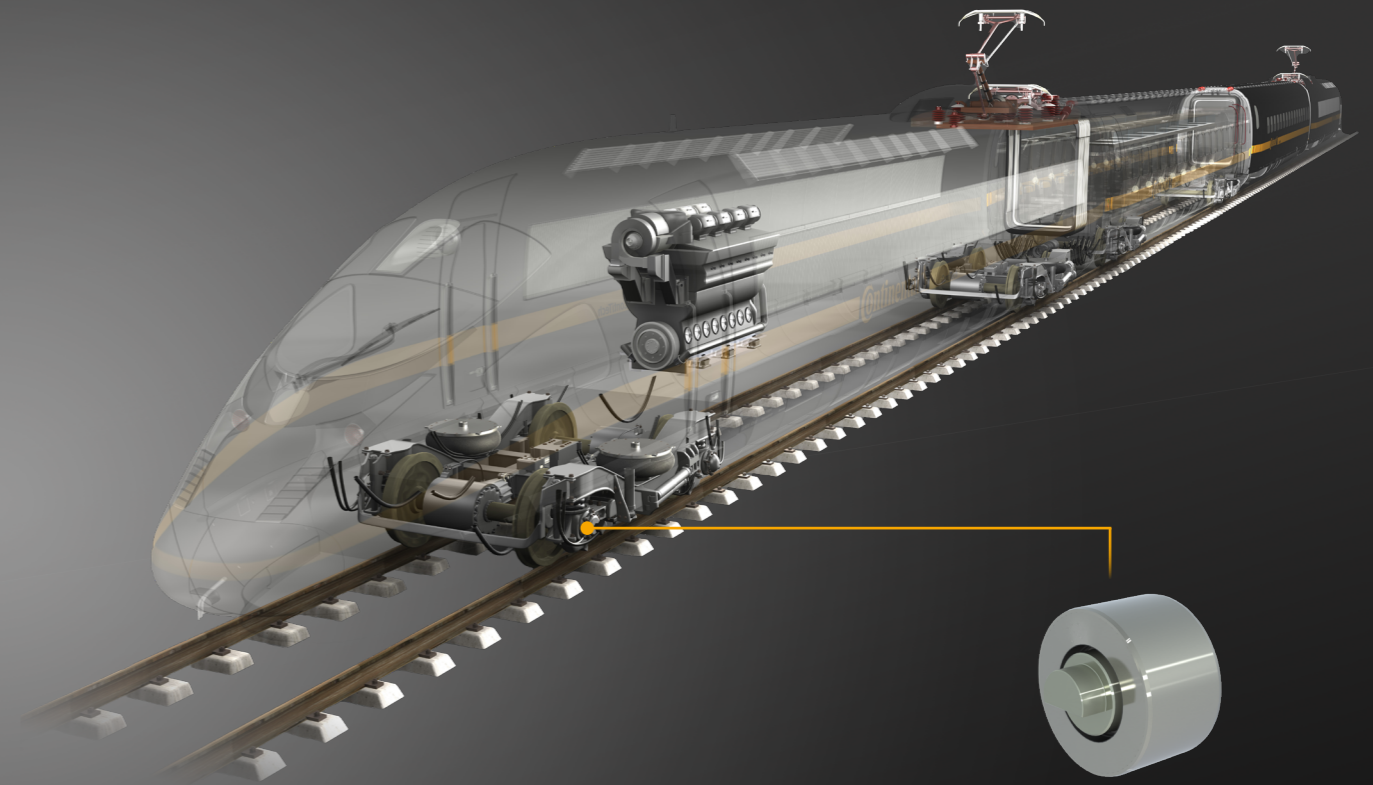
## Advantages:

- › Enhanced passenger comfort through superior vibration and noise reduction
- › Increased lifespan of critical train components due to balanced and effective damping
- › Reduced maintenance costs thanks to our bushes' durability and reliability
- › Improved safety due to smooth articulation and reduced impact of track irregularities
- › Stiffness combination in one direction up to 15 times higher
- › Easily attachable without modification of the bogie



## Tailor-made to Our Customer's Needs

Continental sets itself apart with its excellent mounting, filling, and measurement process. Each bushing is carefully manufactured to our customers' specifications and extensively tested in-house.



› In-house fluid production and viscosity testing

› Availability of fluorescein fluid for easier maintenance control

› Customizable fluid viscosity options

› Further testing possibilities such as fatigue testing

**ContiTech Deutschland GmbH**

Continental Plaza 1  
30173 Hannover, Germany  
(PO Box 169 | 30001 Hannover | Germany)  
Phone +49 511 938-71  
mailservice@contitech.de



**Legal notice**

The content of this publication is not legally binding and is provided as information only. The trademarks displayed in this publication are the property of Continental AG and/or its affiliates. Copyright © 2024 ContiTech Deutschland GmbH. All rights reserved. For complete information go to: [continental-industry.com/en/special-pages/disclaimer-publications](https://continental-industry.com/en/special-pages/disclaimer-publications)